



### HAT #07/25

SIZE M (54–57 cm)

ⓑ

---

**MATERIALS** Lamana Como (100% Merino Superfine, approx. 120 m/25 g) 50 g in color Light Grey shade 42M, 3 mm (UK 11/US 2) and 4 mm (UK 8/US 6) knitting needles, tapestry needle

---

**PATTERN NOTE** Diamond pattern: see chart; RS rows *and* WS rows are shown

**Tension/gauge:** 26 sts and 35 rows in diamond pattern using 4 mm needles = 10 × 10 cm

---

**HOW TO CO** 134 sts using 3 mm needles and work as follows: 1 selvedge st, work 132 sts in pattern (11 pattern repeats), 1 selvedge st. Work as given for 14 rows (2 pattern repeats in height). Change to 4 mm needles and continue in pattern until 10 pattern repeats in height are completed (= 70 rows, 20 cm).

In next RS row start decreasing as follows: work tog the first 2 sts of each diamond as they face you, i.e. selvedge st, p2tog, p 4, k2tog, k 4, etc. (= 22 sts decreased, 112 sts left). Work reduced diamond pattern for 5 more rows.

In following RS row work tog the first 2 sts of each diamond as they face you, i.e. selvedge st, p2tog, p 3, k2tog, k 3 etc. (= 22 sts decreased; 90 sts left). Work 1 WS row in reduced diamond pattern.

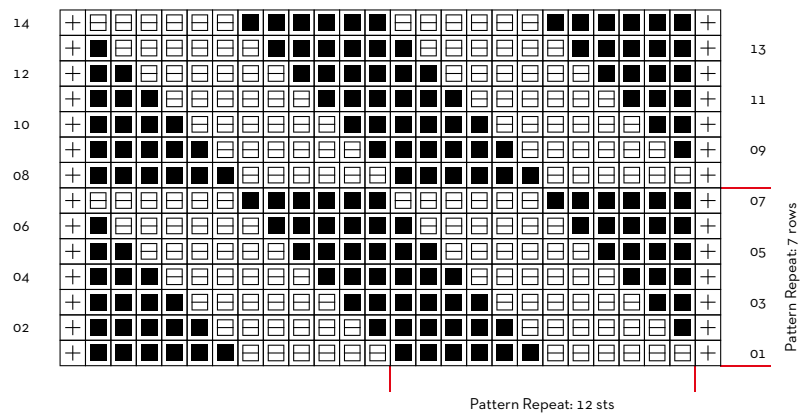
In next RS row work tog the 2 centre sts of each diamond as they face you, i.e. selvedge st, k 2, \*p 1, p2tog, p 1, k 1, k2tog, k 1; rep from \* to last 3 sts, p2tog, selvedge st (= 68 sts left). Work 1 WS row in reduced diamond pattern.

In next 2 RS rows k2tog throughout, in WS rows p all sts. Cut yarn leaving a long tail, thread through rem sts and secure.

---

**TO FINISH** Sew back seam, weave in ends. Cover with a damp cloth and leave until dry.

# LAMANA INSTRUCTION



# LAMANA INSTRUCTION

[www.lamana.de](http://www.lamana.de)



### ABBREVIATIONS

RS = right side

WS = wrong side

st(s) = stitch(es)

CO = cast on

tog = together

p2tog = purl 2 sts together (= 1 st decreased)

k2 tog = knit 2 sts together (= 1 st decreased)

rem = remaining

### SKILL LEVEL

Ⓐ easy   Ⓑ intermediate   Ⓒ advanced

### LEGEND

#### KNITTING SYMBOLS

⊕ selvedge stitch

■ k 1 (RS), p 1 (WS)

☐ p 1 (RS), k 1 (WS)