



COAT #06/04

SIZE S/M (L/XL), Foto Size S/M

ⓑ

MATERIALS Lamana Como Tweed (100% Merino Superfine, approx. 120 m/25 g) 500 g (550) in colour Marble shade 57T, 3.5 mm and 4 mm knitting needles, tapestry needle
Colour variation: Lamana Como (100% Merino Superfine, ca. 120 m/25 g) 500 g (550) in colour Slate Grey shade 28M

PATTERN NOTE

Rib pattern: RS rows: *k1, p1, repeat from * to end of row; WS rows: work sts as they appear

Main Pattern: seed stitch (odd number of sts):

Row 1: *k1, p1, repeat from * to last st, k1

Row 2: *k1, p1, repeat from * to last st, k1. Repeat rows 1 and 2.

3 selvedge sts for front bands:

RS: k1, sl 1 purlwise wyif, k1

WS: sl 1 purlwise wyif, k1, sl 1 purlwise wyif

Gauge: 23 sts and 40 rows in main pattern with 4 mm needles (lightly stretched) = 10 × 10 cm

BACK Cast on 135 sts (145) using 3.5 mm needles and work in rib pattern for 30 rows (8 cm). Change to 4 mm needles and continue in main pattern for 74 cm (78). When work measures 82 cm (86) from cast-on edge shape shoulders on each side using short rows (see appendix) as follows: let stand 2 × 10 sts (2 × 11) and 3 × 8 sts (3 × 9), then work another row in seed st and knit/purl each yo tog with the following st. At the same time BO centre 47 sts in pattern, leaving remaining 44 sts (49) per shoulder on stitch holders.

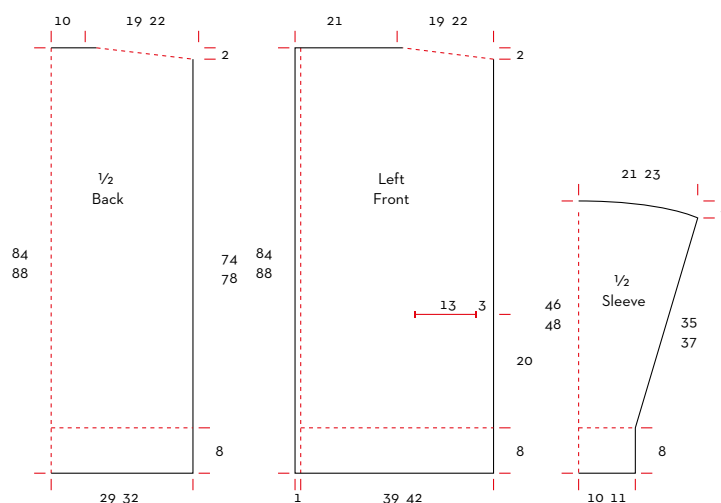
POCKET LININGS Cast on 30 sts using 4 mm needles and work in main pattern for 50 rows. In following row BO 1 st each side (= 28 sts rem), set aside. Work second pocket lining the same way.

LEFT FRONT Cast on 92 sts (97) using 3.5 mm needles and work in rib for 30 rows (8 cm), *at the same time* work last 3 sts of every RS row (and first 3 sts of every WS row) as selvedge sts (see above). Change to 4 mm needles and work in main pattern for 80 rows continuing front band as established. In next RS row insert pocket opening as follows: work 8 sts in pattern, BO 28 sts, work 53 sts (58) in pattern, finally 3 selvedge sts. In following WS row work 56 sts (61) as established, put the 28 pocket sts into the gap and continue in pattern to end of row. When work measures 82 cm (86) from cast-on edge shape shoulder on right side as described above. Then work tog with the 44 (49) corresponding shoulder sts of back (3-needle bind off) and BO rem 48 sts.

RIGHT FRONT Work as left front reversing all shapings.

SLEEVES Cast on 53 sts (63) using 3.5 mm needles and work in rib for 30 rows (8 cm). Change to 4 mm needles and continue in main pattern shaping sleeve as follows: increase 1 st in pattern at beginning and end of every 6th row, work these incs 21 times in total [= 95 sts (105)]. When work measures 43 cm (45) from cast-on edge, shape sleeve cap as follows: BO first 8 sts (9) of following 10 rows, then cast off rem 15 sts in pattern. Work second sleeve the same way.

TO FINISH Sew pocket linings. Set in sleeves, close sleeve and side seams. Weave in ends. Cover with a damp cloth and leave until dry.



APPENDIX

SHORT ROWS

Short rows can be used to create smooth diagonal or curved instead of stair-step edges.

Work until the designated number of sts, *turn work, yarn over on right hand needle (pull yo tightly), work until next turning point (or end of row)*, rep from * to * until desired number of sts is left on stand-by. Then work 1 or 2 rows over all sts knitting yos tog with following st (i.e first st on left hand needle after the gap); in WS rows: purl yo tog tbl with following st.

LAMANA INSTRUCTION

www.lamana.de



LAMANA INSTRUCTION

www.lamana.de



LAMANA INSTRUCTION

www.lamana.de



ABBREVIATIONS

k = knit

p = purl

st(s) = stitch(es)

RS = right side

WS = wrong side

sl = slip

wyif = with yarn in front

BO = bind off

inc(s) = increase(s)

rem = remaining

yo = yarn over

tog = together

SKILL LEVEL

Ⓐ easy Ⓑ intermediate Ⓒ advanced