



PULLOVER #05/15

SIZE S (M/L/XL), Foto size M

ⓑ

MATERIALS Lamana Como (100% Merino Superfine, approx. 120 m/25 g) 300 g (size S/M), 325 g (size L), 350 g (size XL) in color Silver Grey shade 05M,
4 mm knitting needles (UK 8/US 6), cable needle, stitch holders, tapestry needle

PATTERN NOTE Rib pattern: RS rows: selvedge st, *k 2, p 2; rep from * to last st, selvedge st;

WS rows: work sts as they appear

Main pattern: Row 1 (RS): s, *k 2, p 2; rep from * to last st, s.

Row 2 (WS): work sts as they appear

Row 3 (RS): s, *p 2, k 2; rep from * to last st, s.

Row 4 (WS): work sts as they appear. Rep rows 1–4.

Cable pattern: see chart: only RS rows are shown; in WS rows work sts as they appear

Tension/gauge: 22 sts and 30 rows in st st = 10 × 10 cm

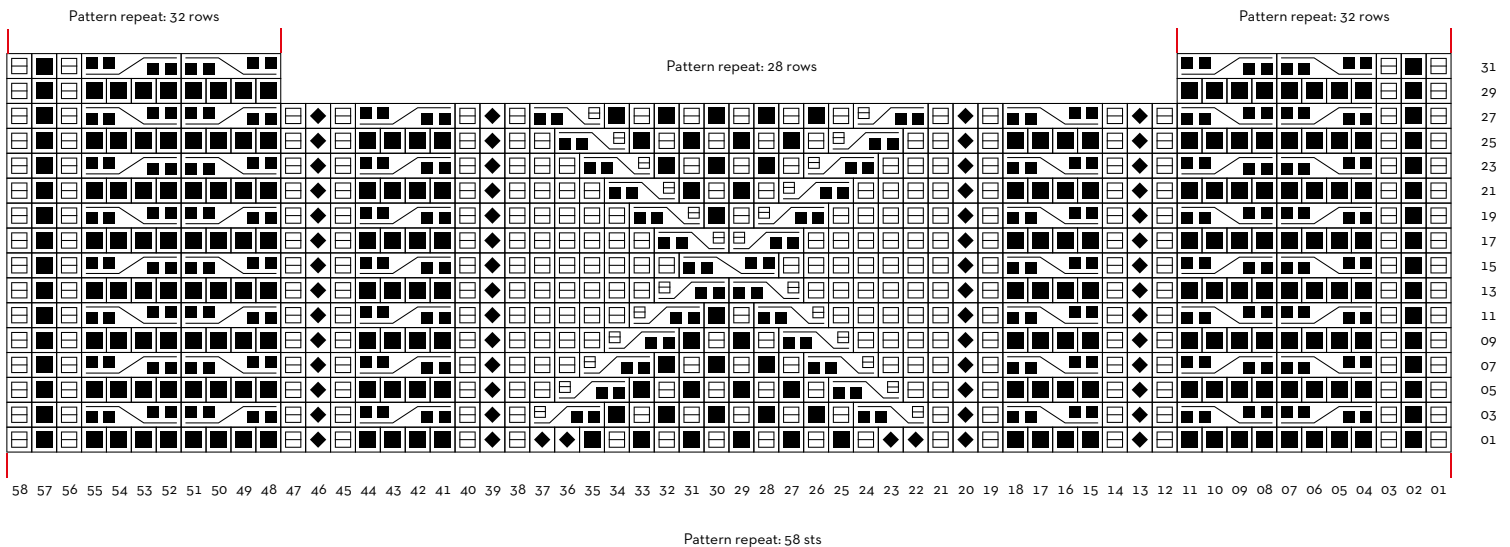
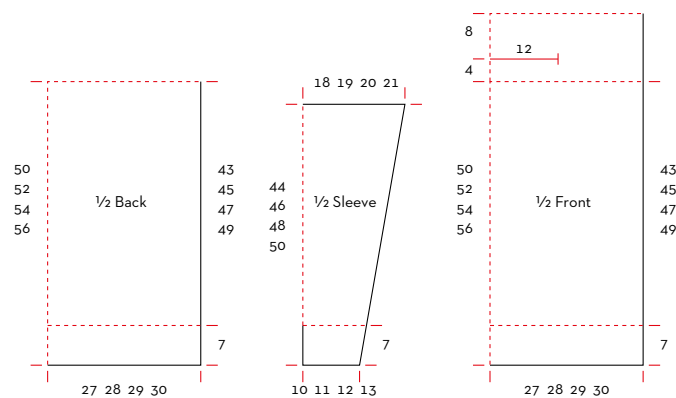
BACK CO 132 sts (136/140/144) and work 24 rows (7 cm) in rib pattern. Continue in main pattern for further 43 cm (45/47/49). When work measures 50 cm (52/54/56) from beg leave sts on holder.

FRONT CO 132 sts (136/140/144) and work 24 rows (7 cm) in rib pattern. Then continue as follows (RS): selvedge st, 36 sts (38/40/42) in main pattern, 58 sts in cable pattern, 36 sts (38/40/42) in main pattern, selvedge st. When work measures 50 cm (52/54/56) from beg (measured at front center) continue to work in rib pattern and after 4 cm BO the middle 58 sts for neckline and CO these sts directly in next row, continue in rib pattern until work measures 62 cm (64/66/68), then leave all sts on holder.

LAMANA INSTRUCTION

SLEEVES CO 46 sts (50/54/58) and work 24 rows (7 cm) in rib pattern. Continue in main pattern and, for sleeve shaping, inc 1 st each side in first RS row, repeat these incs every 8th row 14 times more integrating increased sts into pattern [= 76 sts (80/84/88)]. When work measures 44 cm (46/48/50) from beg BO all sts. Work second sleeve the same way.

TO FINISH Place each piece on a soft underlay and pin to measurements following diagram. Cover with a damp cloth and leave until dry. Remove pins, join shoulder seams using 3 - needle bind off. Close side and sleeve seams (not including borders = side slits). Set in sleeves. Weave in ends.



LAMANA

INSTRUCTION

www.lamana.de



LAMANA

INSTRUCTION

www.lamana.de



LAMANA

INSTRUCTION

www.lamana.de



ABBREVIATIONS

k = knit
p = purl
st(s) = stitch(es)
s = selvedge stitch
rep = repeat
st st = stocking stitch
RS = right side
WS = wrong side
CO = cast on
BO = bind off
beg = beginning
inc(s) = increase(s)
tbl = through back loop
cn = cable needle
sl = slip

SKILL LEVEL

Ⓐ easy Ⓑ intermediate Ⓒ advanced

KNITTING SYMBOLS


■ k 1


□ p 1

◆ k 1 tbl

 slip 1 st to cn and hold to back, k 2, then p 1 from cn

 slip 2 sts to cn and hold to front, p 1, then k 2 from cn

 4-st right cable: sl 2 sts to cn and hold to back, k 2, then k 2 from cn

 4-st left cable: sl 2 sts to cn and hold to front, k 2, then k 2 from cn