



SHAWL #09/01

SIZE approx. 150 cm × 150 cm × 125 cm / 59" × 59" × 50"

ⓑ

MATERIALS Lamana Cusi (100% Alpaca, approx. 225 m / 50 g) 200 g in color Antique Pink shade 40, 4 mm (US 6 / UK 8) knitting needles, 2 dpns size 3.5 mm (US 4 / UK 9), 1 tapestry needle

ABOUT The explanations of abbreviations used in this pattern and the stitch symbols used in chart can be found on last page

PATTERN NOTE Follow the written instructions in the "How to" section and see chart; the chart shows rows 1-37 (only RS rows); in WS rows purl all sts and yos; 1 shell motif pattern repeat is 7 sts wide and 12 rows high

Gauge/Tension: 21 sts and 30 rows in shell pattern = 10 × 10 cm / 4" square
(Please adjust needle size if necessary to obtain correct gauge)

HOW TO The shawl, shaped as a long narrow triangle, is worked from bottom up, starting at the smallest point.

CO 5 sts using 4 mm (US 6 / UK 8) needles and work first 24 rows (shown in chart as "Start") as follows:

Row 1 (RS): k 2, yo, k 3 (1 st increased; 6 sts in total)

Row 2 (WS – and all following WS rows): p all sts and yos

Row 3 (RS): k 2, yo, k 4 (7 sts)

Row 5 (RS): k 2, yo, k 5 (8 sts).

Continue as set up to and including row 12 (WS) with a total of 11 sts.

Row 13 (RS): k 2, yo, sl1-k1-pss0, k 5, yo, k 2

Row 15 (RS): k 2, yo, k 1, sl1-k1-pss0, k 4, yo, k 3

Row 17 (RS): k 2, yo, k 2, sl1-k1-pss0, k 3, yo, k 4

Row 19 (RS): k 2, yo, k 3, sl1-k1-pss0, k 2, yo, k 5

LAMANA

INSTRUCTION

Row 21 (RS): k 2, yo, k 4, sl1-k1-pss0, k 1, yo, k 6
 Row 23 (RS): k 2, yo, k 5, sl1-k1-pss0, yo, k 7.
 After finishing row 24 (WS) there are 17 sts on needle.

Continue working the shell motif as follows:

Row 25 (RS): k 2, yo, *sl1-k1-pss0, k 5, yo, rep from * to last 8 sts (in row 25 this means only 1 patt rep),
 sl1-k1-pss0, k 4, M 1, yo, k 2 (2 sts increased in this row!)

Row 27 (RS): k 2, yo, *k 1, sl1-k1-pss0, k 4, yo, rep from * to last 3 sts, k 3

Row 29 (RS) k 2, yo, *k 2, sl1-k1-pss0, k 3, yo, rep from * to last 4 sts, k 4

Row 31 (RS): k 2, yo, *k 3, sl1-k1-pss0, k 2, yo, rep from * to last 5 sts, k 5

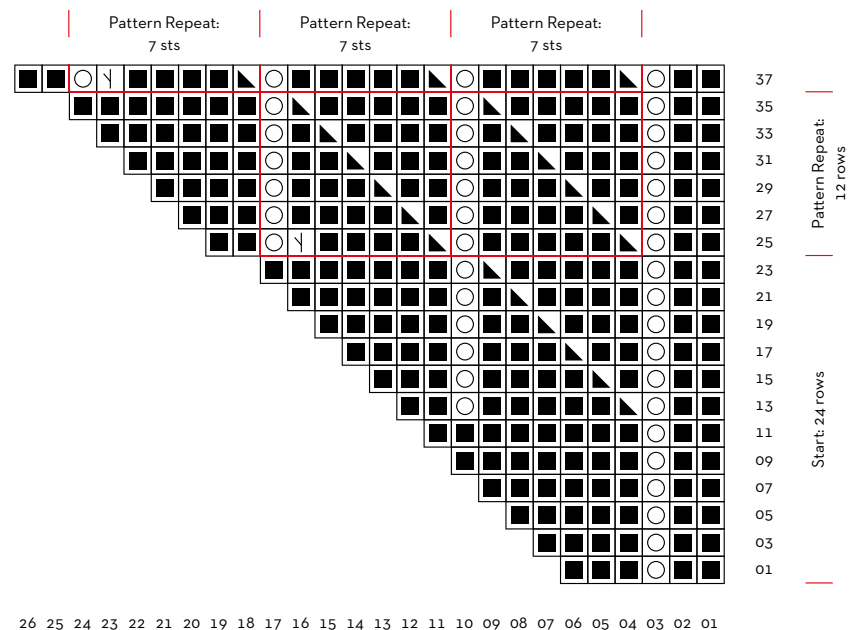
Row 33 (RS): k 2, yo, *k 4, sl1-k1-pss0, k 1, yo, rep from * to last 6 sts, k 6

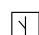
Row 35 (RS): k 2, yo, *k 5, sl1-k1-pss0, yo, rep from * to last 7 sts, k 7.

Rep rows 25–36 throughout. After every pattern rep of 12 rows the pattern has grown by 7 sts in width (= 1 shell motif).

When the shawl has reached the desired length, work up to and including row 12, then, in next RS row, work an I-Cord BO as follows: CO 3 new sts (using cable cast on) at the beginning of row, then, using one 3.5 mm (US 4/UK 9) dpn, k 2, ssk (= the last st of the new CO sts and the first st of main needle), *using the left tip of dpn, slip next st from main needle on dpn, do not turn, but slide the 4 sts to the right hand side of the dpn and using the second dpn: k 2, ssk; rep from * to last 3 sts, BO these 3 sts.

TO FINISH Weave in all ends. Carefully stretch the shawl and leave to dry under damp cloths.



 This inc is only worked in last pattern repeat of first pattern row

LAMANA INSTRUCTION

www.lamana.de



LAMANA INSTRUCTION

www.lamana.de



ABBREVIATIONS

dpn = double pointed needle

k = knit

p = purl

st(s) = stitch(es)

yo(s) = yarn over (yarn overs)

CO = cast on

BO = bind off

patt = pattern

rep = repeat

RS = right side

WS = wrong side

inc = increase

sl = slip

sl1-k1-*p*ss0 = sl 1 st, knit 1 st, pass slipped st over k st (= 1 st decreased)

ssk = slip 1 knitwise, sl 1 knitwise, place sts back on left needle and knit together through back loop (= 1 st decreased)

M 1 = insert left needle tip from back to front into the bar between the last worked st and next st and knit into the front loop, creating a twisted increased st

STITCH SYMBOLS

■ k 1

○ yo

∇ M 1

▴ sl1-k1-*p*ss0

□ 1 pattern repeat

SKILL LEVEL

Ⓐ beginner Ⓑ intermediate Ⓒ advanced