



HAT #09/23

SIZE M (54-57 cm/21.3"-22.4")



MATERIALS Lamana Como (100% Merino Superfine, approx. 120 m/25 g) 25 g each in colors Navy shade 11 (color A), Sage shade 64M (C), Night Blue 53M (D), Jeans 12M (E), Slate Grey 28M (F), Light Grey 42M (G), Dark Denim 41M (H) and Lagoon Blue 55 (I) and Lamana Como Tweed (100% Merino Superfine, approx. 120 m/25 g) 25 g in color Ice Blue shade 54T (color B); (the specified yarn amount will be sufficient for both, hat and wrist warmers #09/24), short (40 cm/16") circular needles sizes 3 mm (US 2.5/UK 11) and 3.5 mm (US 4/UK 9), 1 set of dpns size 3.5 mm (US 4/UK 9), 1 stitch marker, 1 tapestry needle

ABOUT The explanations of the abbreviations used in this pattern can be found on last page, the stitch symbols used in chart can be found on page 3

PATTERN NOTE Border pattern: alternately k 1 in Color B, p 1 in Color A

Main pattern: stranded colorwork, (mainly) worked in st st according to colorwork chart on page 3 (the purl sts in some of the rnds are shown in chart as dotted boxes); chart shows 1 pattern rep of each motif; work pattern rep to end of rnd

Gauge/Tension: 30 sts and 34 rnds in stranded colorwork using 3.5 mm (US 4/UK 9) size needles = 10 × 10 cm/4" square

(Please adjust needle size if necessary to obtain correct gauge)

HOW TO CO 132 sts using 3 mm (US 2.5/UK 11) needles and color A. Turn work, join color B and work 1 row in border pattern. After finishing this row join for knitting in the round (pm to indicate beg of rnd). Work another 11 rnds in border pattern, then k 1 rnd in color A and at the same time increase 12 sts evenly spaced

LAMANA

INSTRUCTION

(= 144 sts).

Start working rnd 1 of chart, work all single colored rnds using 3 mm (US 2.5/UK 11) needles, all multi-colored rnds using 3.5 mm (US 4/UK 9) needles and in all multicolored rnds twist the yarn that is carried along at the back of work with the working yarn every 2-3 sts, to avoid long floats.

After finishing rnd 45, start crown shaping as follows:

Rnd 46 (color B): *k 10, k2tog, rep from * (12 sts decreased; 132 sts rem)

Rnd 47 (in C): k

Rnd 48 (in H): k 9, k2tog, rep from * (-12 sts; 120 sts rem)

Rnd 49: *k 2 in E, k 8 in H, rep from * to end of rnd

Rnd 50: *p 2 in E, k 6 in H, k2tog in H, rep from * to end of rnd (108 sts rem)

Rnd 51: *p 2 in E, k 7 in H, rep from *

Rnd 52: *p 2 in C, k 5 in H, k2tog in H, rep from * (96 sts)

Rnd 53: *p 2 in C, k 6 in H, rep from *

Rnd 54: *p 2 in C, k 4 in H, k2tog in H, rep from * (84 sts)

Rnd 55: *p 2 in B, k 5 in H, rep from *

Rnd 56: *p 2 in B, k 3 in H, k2tog in H, rep from * (72 sts). Change to dpns.

Rnd 57: *p 2 in B, k 4 in H, rep from *

Rnd 58: *p 2 in G, k 2 in H, k2tog in H, rep from * (60 sts)

Rnd 59: *p 2 in G, k 3 in H, rep from *

Rnd 60: *p 2 in G, k 1 in H, k2tog in H (48 sts)

Rnd 61: *p 2 in G, k 2 in H, rep from *

The next rnds are no longer shown in chart:

Rnd 62: *p2tog in G, k 2 in H, rep from * (36 sts)

Rnd 63: *p 1 in G, k2tog in H, rep from * (24 sts), cut color G.

Rnd 64 and 65: *k2tog in H, rep from *




Cut yarn, leaving a long tail, pull through rem 6 sts using a tapestry needle and secure on the inside.

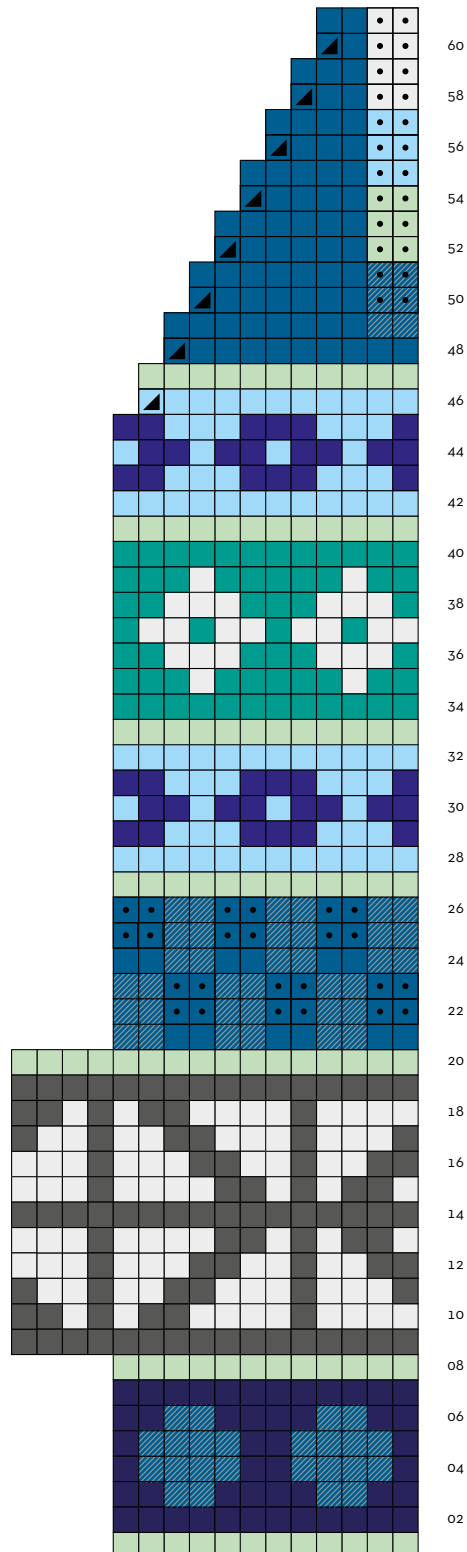
TO FINISH Weave in all yarn ends. Pull the hat over a round shape (ball), dampen and leave to dry.

LAMANA INSTRUCTION

Hat #23

-  Navy 11 (Color A)
-  Ice Blue 54T (B)
-  Sage 64M (C)
-  Night Blue 53M (D)
-  Jeans 12M (E)
-  Slate Grey 28M (F)
-  Light Grey 42M (G)
-  Dark Denim 41M (H)
-  Lagoon Blue 55 (I)

-  k 1
-  p 1
-  k2tog



LAMANA INSTRUCTION

www.lamana.de



LAMANA

INSTRUCTION

www.lamana.de



ABBREVIATIONS

dpn(s) = double pointed needles

k = knit

p = purl

st(s) = stitches

st st = stockinette stitch

rnd(s) = round(s)

rep = repeat

CO = cast on

pm = place marker

beg = beginning

k2tog = knit 2 sts together

SKILL LEVEL

Ⓐ beginner Ⓑ intermediate Ⓒ advanced